

# DID YOU KNOW?

about our...



**NEW  
PRODUCT**

## Beam Clamp Hanger

**BEAM CLAMP HANGER**  
ZINC PLATED (RoHS COMPLIANT) / HEC

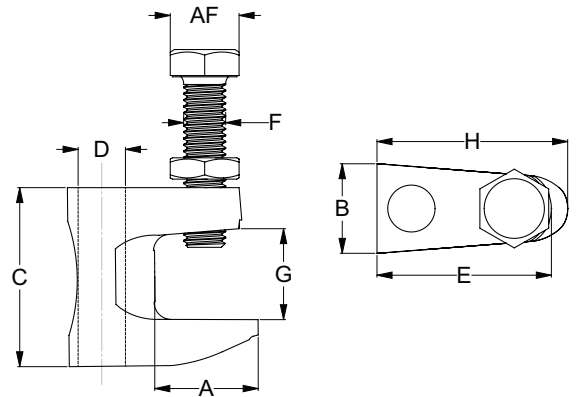
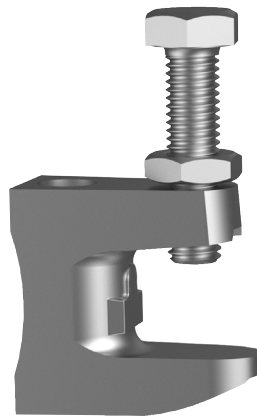
Part	QFind	A	B	C	D	E	F	G	H	AF
		(mm)	(mm)	(mm)	(mm)	(mm)	(mm)	(mm)	(mm)	(mm)
PHSCIZHBCM10	H1600-M10	23	21.0	42	M10	41	M10	20	44	17
PHSCIZHBCM12	H1600-M12	32	23.5	54	M12	48	M10	26	58	17

### APPLICATIONS

- Heating
- Sprinkler systems
- Acoustics system
- Ventilation and air-conditioning systems
- Electrical, piping and sanitation fittings
- Engineering and steel structures

### FEATURES

- Suitable for straight and tapered flanges of I-beams
- Includes lock nut to prevent bolt loosening
- Drilled hole is not threaded, enabling faster installation
- Can fit multiple flange thicknesses



# CONSTRUCT

Disclaimer: while every reasonable effort has been made to ensure that this document is correct at the time of printing, Hobson Engineering®, its agencies and employees disclaim all liability in respect to anything or the consequences of anything done or omitted regarding the whole or any part of this document. HEC product marking is the manufacturing mark of Hobson Engineering. HEC is a registered trademark of Hobson Engineering.

Bolt Tension | Anti-Vibration | Product Reliability | Traceability

[hobson.com.au](http://hobson.com.au) **QUALITY FASTENERS SINCE 1935**



24-1028DYK