



# PRODUCT DATA

## Lifting Point D Ring Long

Weld on lift points add permanent anchor points onto spreader beams or heavy equipment.

Applications	
<ul style="list-style-type: none"> <li>• Can be welded onto any carbon steel surface</li> <li>• Lifting Point</li> <li>• Fixed anchor point for spreader beam attachment</li> <li>• Anchor point for load restraint</li> </ul>	

<b>Material</b>	Grade 80
-----------------	----------

<b>Finish</b>	Powder Coat
---------------	-------------

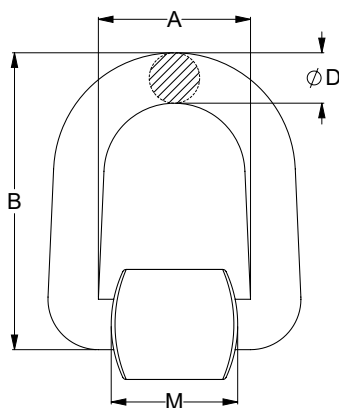
Part	QFind	Dimensions			
		A (mm)	B (mm)	ØD (mm)	M (mm)
ULLW08PDS01	LW08DS1	55.0	95.7	14.0	50.0
ULLW08PDS03	LW08DS3	50.0	99.0	17.0	58.0
ULLW08PDS05	LW08DS5	74.0	137.0	22.0	64.0
ULLW08PDS08	LW08DS10	63.5	144.0	26.5	66.5

### Features

- Approved for lifting
- Weldable strap with WLL mark



WLL markings on D ring and strap



- MARKINGS:**
- CE (European Conformity)
  - WLL (Working Load Limit)
  - Trace Code (linked to certificate online)
  - Manufacturer's mark

You can download this Test Certificate and/or Report from our website:  
[hobson.com.au](http://hobson.com.au)

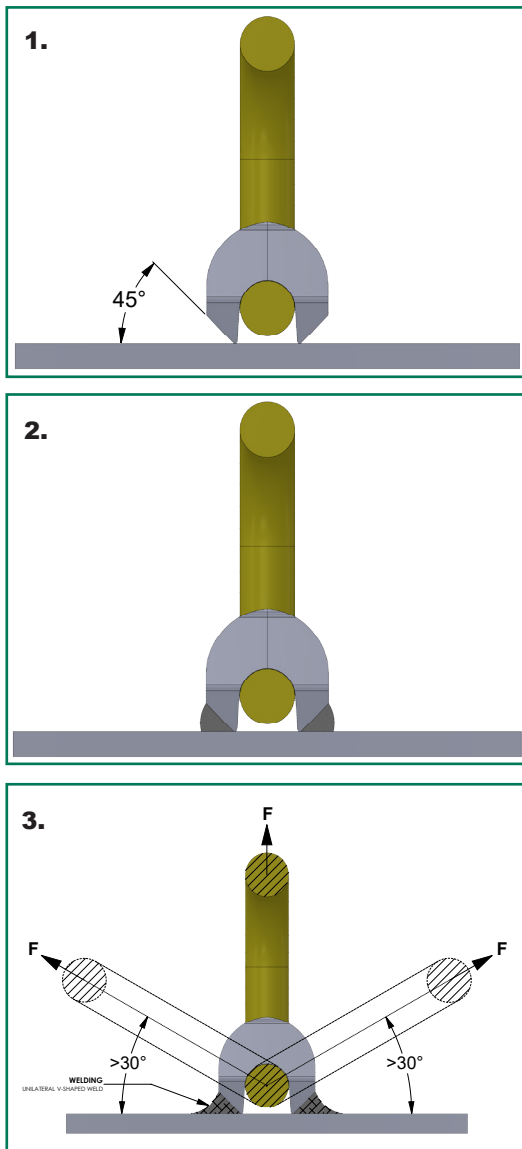
Disclaimer: While every reasonable effort has been made to ensure that this document is correct at the time of printing, Hobson Engineering®, its agencies and employees, disclaim any and all liability to any person in respect of anything or the consequences of anything done or omitted to be done in reliance upon the whole or any part of this document.



# PRODUCT DATA

## Lifting Point D Ring Long

### Installation



### Installation Guide

Welding should be carried out by an authorised welder according to AS 1554 or other relevant standard

1. Prepare surface and ensure that contact areas are clean, free from oil, paint and rust
2. Align joint components and tack weld
3. The welding process shall not be interrupted to prevent welding blocks from losing temperature
4. Root welding must be started in the centre of the weld block
5. Root weld must be cleaned before beginning subsequent runs
6. The butt joint shall be reinforced with a fillet weld

Part	Weld Size	Weld Length (mm)	Weld Volume (cm <sup>3</sup> )
ULLW08PDS01	HV 5 + a3	50.0	1.2
ULLW08PDS03	HV 7 + a3	58.0	2.6
ULLW08PDS05	HV 8 + a3	64.0	3.2
ULLW08PDS08	HV 12 + a3	66.5	8.7

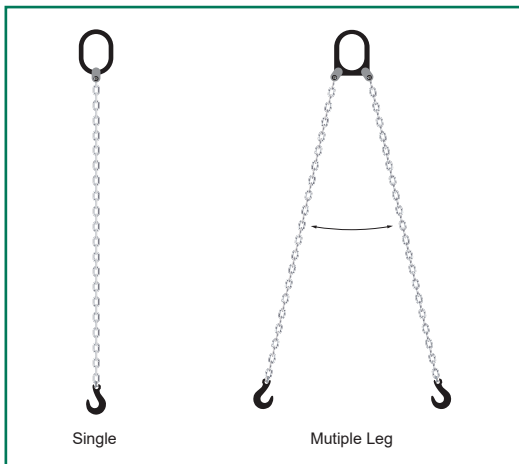
Disclaimer: While every reasonable effort has been made to ensure that this document is correct at the time of printing, Hobson Engineering®, its agencies and employees, disclaim any and all liability to any person in respect of anything or the consequences of anything done or omitted to be done in reliance upon the whole or any part of this document.



# PRODUCT DATA

## Lifting Point D Ring Long

### Working Load Limits



#### Positioning

- Positioning shall be installed in a manner that can withstand all angles and load strain.
- Lifting points should be positioned in a way that where hooking and unhooking can be completed safely.
- **Single Leg Lift** - Lifting point shall be vertical above load center of gravity.
- **Two Leg Lifts** - Lifting point shall be equidistant from load center of gravity.
- **Multiple Leg Lifts** - Lifting point shall be arranged symmetrically around load center of gravity.

#### Working Load Limits (WLL) - Tonnes

Part	Single	Multiple Leg		
		0°	60°	90°
ULLW08PDS01	1	1.7	1.4	1
ULLW08PDS03	3	5.2	4.2	3
ULLW08PDS05	5	8.7	7.1	5
ULLW08PDS08	8	13.9	11.3	8

Disclaimer: While every reasonable effort has been made to ensure that this document is correct at the time of printing, Hobson Engineering®, its agencies and employees, disclaim any and all liability to any person in respect of anything or the consequences of anything done or omitted to be done in reliance upon the whole or any part of this document.