



PRODUCT DATA

Grade 100 Swivel Safety Hook

Safety hook locks while swivel action assists with aligning the load prior to lifting.

| Applications | |
|--|--|
| • Use with Grade 100 lifting components | |
| • Lifting with chains and synthetic slings | |

| | |
|-----------------|-----------|
| Material | Grade 100 |
|-----------------|-----------|

| | |
|---------------|-------------|
| Finish | Powder Coat |
|---------------|-------------|

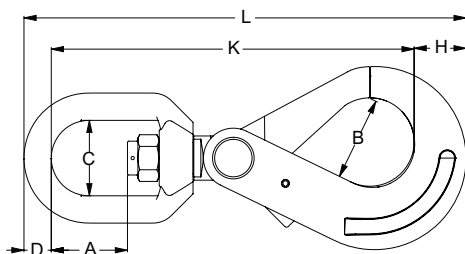


Features

- Conforms to AS 3776
- 100% magnaflux crack detection
- 360° swivel motion
- Safety hook prevents components from releasing when being lifted



| Part | QFind | Size | WLL | BL | Dimensions | | | | | | |
|--------------|-------|------|------|------|------------|--------|--------|--------|--------|--------|--------|
| | | | | | A (mm) | B (mm) | C (mm) | D (mm) | K (mm) | H (mm) | L (mm) |
| ULHK10PSS-06 | HSS6 | 6 | 1.4 | 5.6 | 23.0 | 27.0 | 32.5 | 11.5 | 152.5 | 20.0 | 184.0 |
| ULHK10PSS-08 | HSS8 | 8 | 2.5 | 10.0 | 27.5 | 35.0 | 36.0 | 13.0 | 188.0 | 25.0 | 226.0 |
| ULHK10PSS-10 | HSS10 | 10 | 4.0 | 16.0 | 33.0 | 43.0 | 42.0 | 15.5 | 225.5 | 28.0 | 269.0 |
| ULHK10PSS-13 | HSS13 | 13 | 6.7 | 26.8 | 39.0 | 51.5 | 50.0 | 17.0 | 270.0 | 40.0 | 327.0 |
| ULHK10PSS-16 | HSS16 | 16 | 10.0 | 40.0 | 56.0 | 59.0 | 70.0 | 21.5 | 342.0 | 49.5 | 413.0 |



MARKINGS:

- **CE** (European Conformity)
- **WLL** (Working Load Limit)
- **Trace Code** (linked to certificate online)
- **Manufacturer's mark**

Disclaimer: while every reasonable effort has been made to ensure that this document is correct at the time of printing, Hobson Engineering®, its agencies and employees disclaim all liability in respect to anything or the consequences of anything done or omitted regarding the whole or any part of this document.

Bolt Tension | Anti-Vibration | Product Reliability | Traceability

hobson.com.au **QUALITY FASTENERS SINCE 1935**

