



# PRODUCT DATA

## Lifting Eye Bolt - DIN 580

Eye bolt approved and certified for lifting.  
 Can be used in axial or angular loading.

Applications	
•	Connection point for anchoring, rigging, pulling, lifting or hoisting.
•	Can be used with ropes, cables, shackles and hooks.
•	Threaded onto steel equipment, machine and structures.
•	Bolted through steel or timber profiles and secured with a nut.

<b>Material</b>	316 Stainless
-----------------	---------------

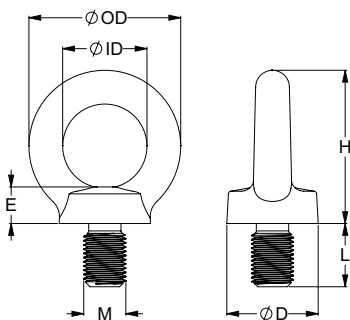
<b>Finish</b>	316 Stainless
---------------	---------------



### Features

- Approved for lifting.
- Stamped with working load for axial loading.

Part	QFind	Size	Length	Height	Inside Eye Diameter	Outside Eye Diameter	Collar Diameter	Collar Height
		M	L (mm)	H (mm)	Ø ID (mm)	Ø OD (mm)	Ø D (mm)	E (mm)
ULEB16PD5M06	<b>EB16M6</b>	M6	13.0	36	20	36	20	6
ULEB16PD5M08	<b>EB16M8</b>	M8	13.0	36	20	36	20	6
ULEB16PD5M10	<b>EB16M10</b>	M10	17.0	45	25	45	25	8
ULEB16PD5M12	<b>EB16M12</b>	M12	20.5	53	30	54	30	10
ULEB16PD5M16	<b>EB16M16</b>	M16	27.0	62	35	63	35	12
ULEB16PD5M20	<b>EB16M20</b>	M20	30.0	71	40	72	40	14
ULEB16PD5M24	<b>EB16M24</b>	M24	36.0	90	50	90	50	18
ULEB16PD5M30	<b>EB16M30</b>	M30	45.0	109	60	108	65	22



### MARKINGS:

- CE (European Conformity)
- WLL (Working Load Limit)
- Other markings: Manufacturer's Mark, Material Grade (A4), Size, Arrow indicating axial direction

You can download this Test Certificate and/or Report from our website:  
[hobson.com.au](http://hobson.com.au)

Disclaimer: While every reasonable effort has been made to ensure that this document is correct at the time of printing, Hobson Engineering®, its agencies and employees, disclaim any and all liability to any person in respect of anything or the consequences of anything done or omitted to be done in reliance upon the whole or any part of this document.

Bolt Tension | Anti-Vibration | Product Reliability | Traceability

[hobson.com.au](http://hobson.com.au) **QUALITY FASTENERS SINCE 1935**





# PRODUCT DATA

## Lifting Eye Bolt - DIN 580

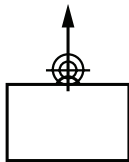
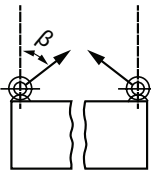
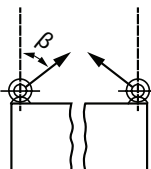
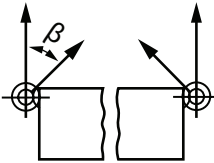
Page 2 of 2

### Minimum Ultimate Tensile Loads

Thread size	M6	M8	M10	M12	M16	M20	M24	M30
Minimum ultimate tensile load (axial)	4.4	8.2	13.5	20.0	41.2	70.6	106.0	189.0
Minimum ultimate tensile load (transverse, at 90°)	2.2	4.1	6.8	10.0	20.6	35.3	53.0	94.2

Minimum ultimate tensile loads in kN

### Load-bearing capacity depending on direction of loading

Thread size		M6	M8	M10	M12	M16	M20	M24	M30
Load-bearing capacity, axial (WLL) per eye bolt		75	140	230	340	700	1200	1800	3200
Load-bearing capacity per eye bolt $0^\circ < \beta \leq 45^\circ$		55	100	170	240	500	860	1290	2300
Load-bearing capacity per eye bolt $\beta > 45^\circ$ to $60^\circ$		38	70	115	170	350	600	900	1600
Load-bearing capacity per eye bolt, with bolt fitted at sides of load $0^\circ \leq \beta \leq 45^\circ$									

Load-bearing capacity in kilogram.

Disclaimer: While every reasonable effort has been made to ensure that this document is correct at the time of printing, Hobson Engineering®, its agencies and employees, disclaim any and all liability to any person in respect of anything or the consequences of anything done or omitted to be done in reliance upon the whole or any part of this document.

Bolt Tension | Anti-Vibration | Product Reliability | Traceability

[hobson.com.au](http://hobson.com.au) **QUALITY FASTENERS SINCE 1935**