

# DID YOU KNOW?

about our...



**NEW  
PRODUCT**

## Barrel Nut Pan Internal HEX

### BARREL NUT PAN INTERNAL HEX 316 STAINLESS / HEC / A4



316



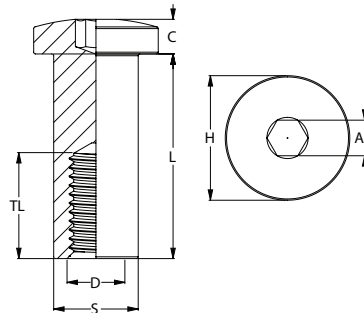
| Part        | Nominal Size | Length | Thread Length | Diameter | Head Height | Head Diameter | Drive Size |
|-------------|--------------|--------|---------------|----------|-------------|---------------|------------|
|             | D (mm)       | L (mm) | TL (mm)       | S (mm)   | C (mm)      | H (mm)        | AF (mm)    |
| NB16PPICM06 | 6            | 30     | 26            | 8        | 4.7         | 14            | 4          |
| NB16PPICM08 | 8            | 34     | 27            | 10       | 5.8         | 16            | 5          |
| NB16PPICM10 | 10           | 34     | 28            | 13       | 6.3         | 18            | 6          |
| NB16PPICM12 | 12           | 40     | 34            | 15       | 8.4         | 21            | 8          |

#### APPLICATIONS

- Furniture connections
- Can be used with steel, timber or heavy-duty plastic
- Can replace nut on masonry fixings

#### FEATURES

- Decorative nut installed on protruding male thread
- Internal HEX drive for increased leverage when tightening
- 316 Stainless Steel for increased corrosion performance



You can download this  
Test Certificate and/or  
Report from our website:

[hobson.com.au](http://hobson.com.au)

Disclaimer: while every reasonable effort has been made to ensure that this document is correct at the time of printing, Hobson Engineering®, its agencies and employees disclaim all liability in respect to anything or the consequences of anything done or omitted regarding the whole or any part of this document. HEC product marking is the manufacturing mark of Hobson Engineering. HEC is a registered trademark of Hobson Engineering.

Bolt Tension | Anti-Vibration | Product Reliability | Traceability

[hobson.com.au](http://hobson.com.au) **QUALITY FASTENERS SINCE 1935**



240909DYK