



PRODUCT DATA

HBS-BOLT® Flush

Description

The **HBS-Bolt® FLUSH** is suitable for various steel connections due to its high shear capacity and large grip range. This enables installation where there is limited access as well as one-sided installation for fixing steel to hollow sections.

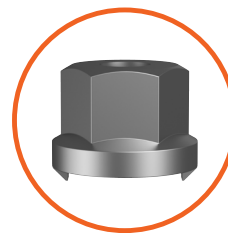
Applications	
•	Fixing steel to hollow steel sections
•	Use with square, rectangle and circular hollow sections
•	High shear and tensile capacities
•	Large grip range
•	One-sided installation with flush fit head
•	Steel framework, including gantries, bridges, stadiums and transmission towers

Material	Class 8.8
-----------------	-----------

Coating	Hot Dip Galvanised
----------------	--------------------

3-part assembly

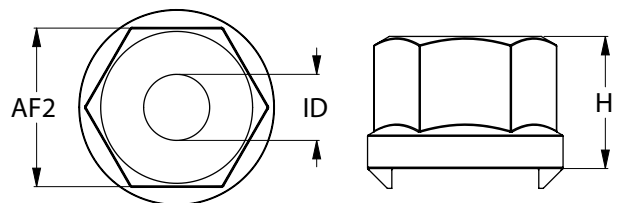
- » M8
- » M10
- » M12



Flush Fit Sleeve
Setting nut **needed**
for installation.
1x install tool included
in each carton.

Use with:

Flush Fit Sleeve Setting Nut				
Part	Nominal Size	Spanner Size	Height	Inner Diameter
		AF2 (mm)	H (mm)	ID (mm)
KBB88GUNM08	M8	19	20	8
KBB88GUNM10	M10	24		10
KBB88GUNM12	M12	30		12



Disclaimer: while every reasonable effort has been made to ensure that this document is correct at the time of printing, Hobson Engineering®, its agencies and employees disclaim all liability in respect to anything or the consequences of anything done or omitted regarding the whole or any part of this document.

Bolt Tension | Anti-Vibration | Product Reliability | Traceability

hobson.com.au **QUALITY FASTENERS SINCE 1935**





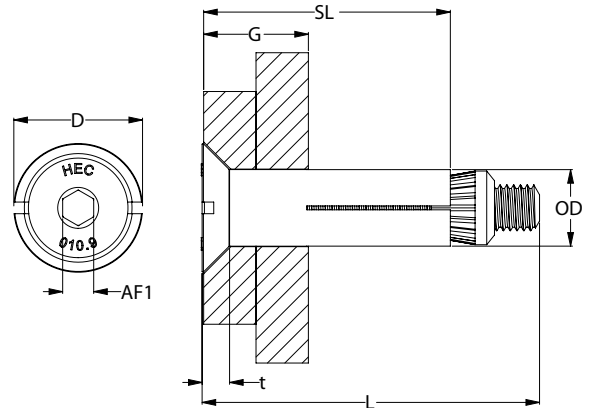
PRODUCT DATA

HBS-BOLT® Flush

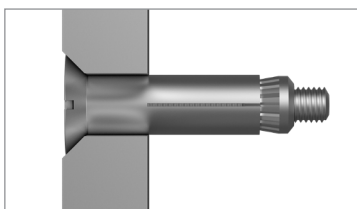
Dimensions



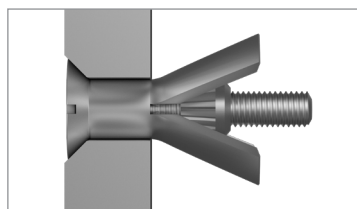
▶ 3-Part Assembly



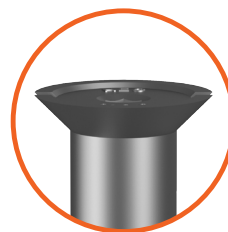
3-Part Assembly									
Part	QFind	Nominal Size	Bolt Length	Grip Range	Internal Hex Size	Sleeve		Collar	
						Length	Outer Ø	Across Flats	Thickness
			L (mm)	G (mm)	AF1 (mm)	SL (mm)	OD (mm)	AF2 (mm)	t (mm)
KBB88GUM080050	HBUG850	M8	50	8-27	5	35	13.75	23.7	5
KBB88GUM080070	HBUG870		70	27-46		54			
KBB88GUM080090	HBUG890		90	46-65		73			
KBB88GUM100050	HBUG1050	M10	50	9-28	6	36	17.75	27.7	6
KBB88GUM100070	HBUG1070		70	28-47		54			
KBB88GUM100090	HBUG1090		90	47-66		73			
KBB88GUM120055	HBUG1255	M12	55	10-32	8	42	19.75	34.6	7
KBB88GUM120080	HBUG1280		80	32-54		64			
KBB88GUM120100	HBUG12100		100	54-76		86			



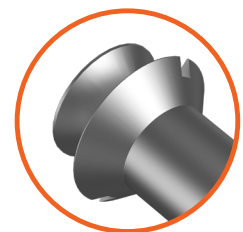
Before



After



Countersunk sleeve collar for a flush installation.



Contains two slot channels to hold the collar in place during installation.

Disclaimer: while every reasonable effort has been made to ensure that this document is correct at the time of printing, Hobson Engineering®, its agencies and employees disclaim all liability in respect to anything or the consequences of anything done or omitted regarding the whole or any part of this document.

Bolt Tension | Anti-Vibration | Product Reliability | Traceability

hobson.com.au **QUALITY FASTENERS SINCE 1935**





PRODUCT DATA

HBS-BOLT® Flush

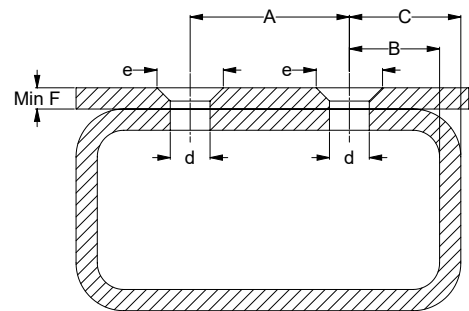
Mechanical Properties

Part Prefix.	Nominal Size	Characteristic Load ^a		Working Load	
		Tensile	Shear	Tensile	Shear
		kN	kN	kN	kN
KBB88GUM08	M8	24.3	26.1	6.0	7.0
KBB88GUM10	M10	44.8	45.6	10.0	12.0
KBB88GUM12	M12	51.6	58.3	13.0	15.0

^aCharacteristic loads are used to calculate design resistance and only apply to the HBS-Bolt assembly. They should not be used as working loads. The design resistance of the connection may be lower due to the material properties of other parts of the connection.

Hole Size and Spacing

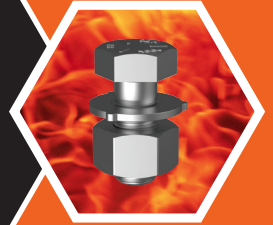
Nominal Size	Hole in Steel Work	Countersink	Hole Spacing		Edge Distance	Min. Fixture Thickness	Nominal Tightening Torque
			A (mm)	B (mm)			
		e (mm)	A (mm)	B (mm)	C (mm)	F (mm)	Nm
M8	14.0 - 15.0	23.5 - 24.0	35	13	C > 17.5	5	25
M10	18.0 - 19.0	27.5 - 28.0	40	15	C > 22.5	6	45
M12	20.0 - 21.0	34.5 - 35.0	50	18	C > 25.0	7	80



Disclaimer: while every reasonable effort has been made to ensure that this document is correct at the time of printing, Hobson Engineering®, its agencies and employees disclaim all liability in respect to anything or the consequences of anything done or omitted regarding the whole or any part of this document.

Bolt Tension | Anti-Vibration | Product Reliability | Traceability

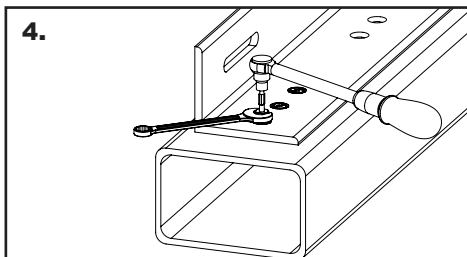
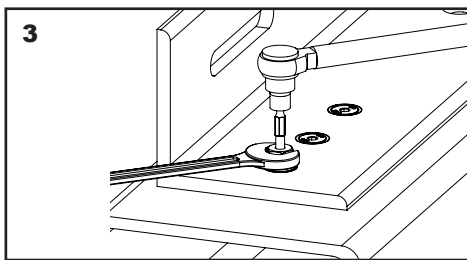
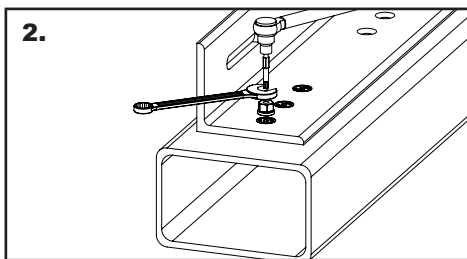
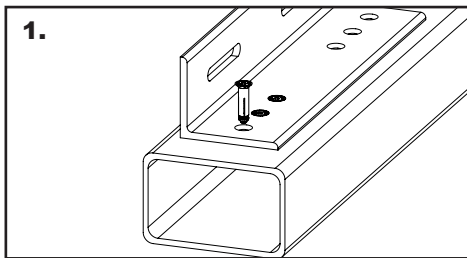
hobson.com.au **QUALITY FASTENERS SINCE 1935**



PRODUCT DATA

HBS-BOLT® Flush

Installation



Installation Guide

1. Bring steel work together, align pre-drilled holes and insert HBS-Bolt® FLUSH.
2. Prepare suitably sized open ended spanner, flushfit sleeve setting nut (KBB88GUNM) and a torque wrench with internal hex drive bit.
3. Place spanner over the setting nut and insert drive bit in the internal hex drive.
4. Holding the spanner in place, tighten the bolt head to the specified tightening torque.

Disclaimer: while every reasonable effort has been made to ensure that this document is correct at the time of printing, Hobson Engineering®, its agencies and employees disclaim all liability in respect to anything or the consequences of anything done or omitted regarding the whole or any part of this document.

Bolt Tension | Anti-Vibration | Product Reliability | Traceability

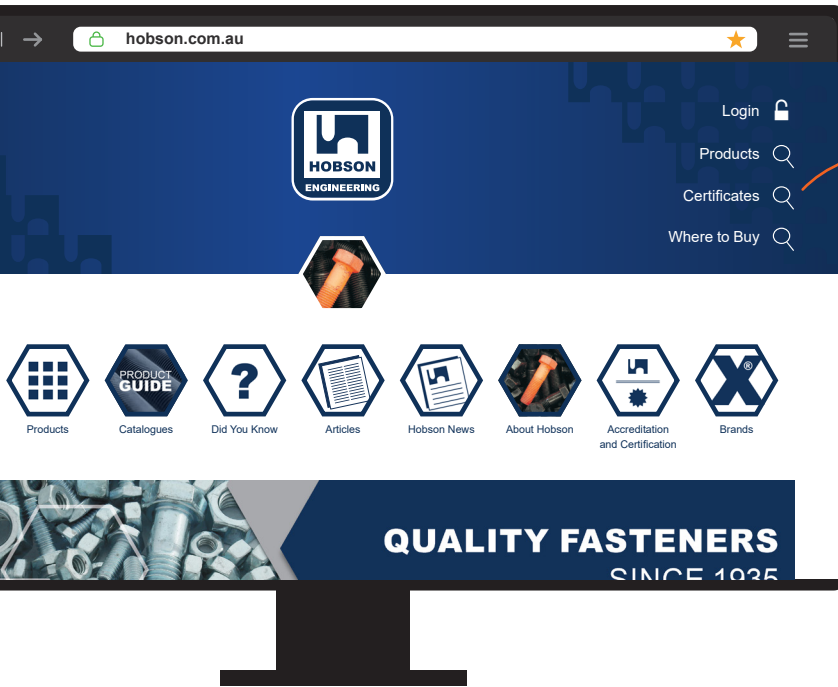
hobson.com.au **QUALITY FASTENERS SINCE 1935**



PRODUCT DATA

HBS-BOLT® Flush

Quality Assurance Documentation Online



You can download this Test Certificate and/or Report from our website: **hobson.com.au**

AL3

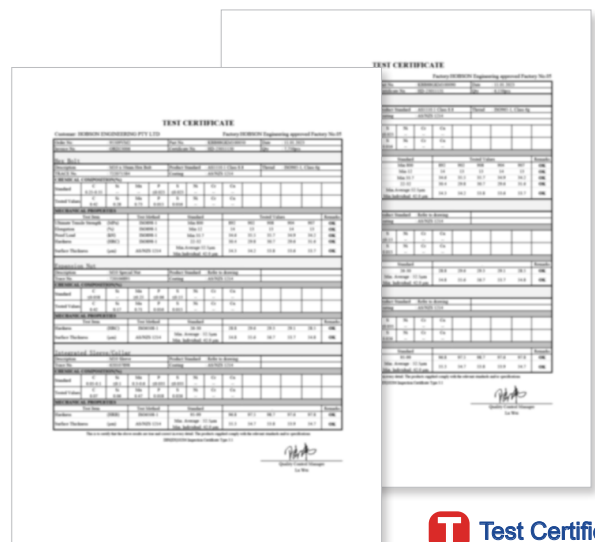
123456789

Type the unique **3-character Trace Code** on the bolt head, or the **Trace Number** on the label.

Codes are example only.



NATA Certificate



Test Certificate

Disclaimer: while every reasonable effort has been made to ensure that this document is correct at the time of printing, Hobson Engineering®, its agencies and employees disclaim all liability in respect to anything or the consequences of anything done or omitted regarding the whole or any part of this document.

Bolt Tension | Anti-Vibration | Product Reliability | Traceability

hobson.com.au **QUALITY FASTENERS SINCE 1935**

