




PRODUCT DATA


NW21 Solar Screw Kit Timber - 304 Stainless

Solar panel screw kit, assembled with EPDM sealing washer and three flanged hexagon nuts. Pre-drilled hole required.

For the mounting of solar panels on **timber framed** roof structures. Suitable to be used with most types of roof cladding.

Applications	Trades
<ul style="list-style-type: none"> Solar panel installation External roof bracket 	<ul style="list-style-type: none"> Roofers Solar Panel Installers

Material	 304 Stainless
----------	---

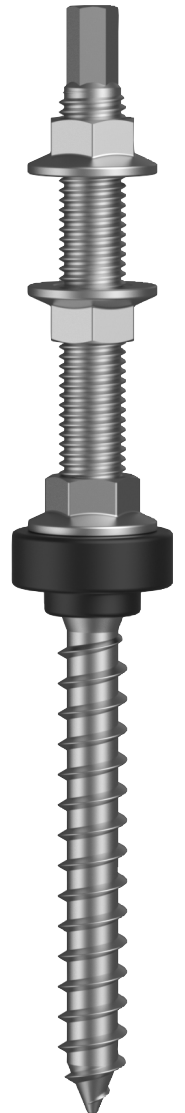
Finish	 304 Stainless
--------	---

Solar Panel Screw Assembly - Timber

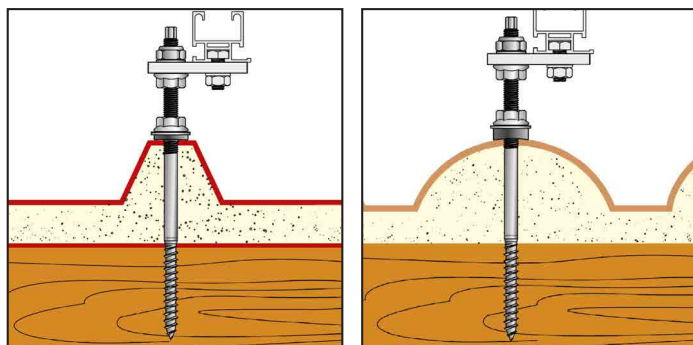


Features

- Supplied assembled
- External Hex Drive
- Fixing to timber frames



Installation



NW21 Solar Screw Kit includes:

- 1 x EPDM based TPV (thermoplastic vulcanizates) sealing washer - black.
- 3 x 304 Stainless Steel Hex Flanged nuts with locking serration (ISO 4161 / DIN 6923).
- Note: M8 have an additional flat washer.

* Additional locking nut supplied if required



Disclaimer: While every reasonable effort has been made to ensure that this document is correct at the time of printing, Hobson Engineering®, its agencies and employees, disclaim any and all liability to any person in respect of anything or the consequences of anything done or omitted to be done in reliance upon the whole or any part of this document.

Bolt Tension | Anti-Vibration | Product Reliability | Traceability

hobson.com.au **QUALITY FASTENERS SINCE 1935**

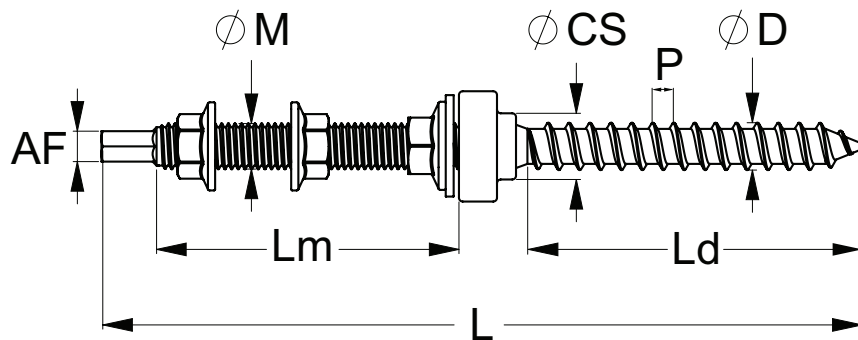




PRODUCT DATA

NW21 Solar Screw Kit Timber - 304 Stainless

Part	QFind	Size	Screw Diameter	Screw Pitch	Overall Length	Thread Length	Screw Thread Length	Across Flats	Cladding Seal Hole	Pack Qty
		ØM	ØD	P	L	Lm	Ld	AF	ØCS Dia	
			(mm)	(mm)	(mm)	(mm)	(mm)	(mm)	(mm)	
MTFENW2108150	NW2108150	M8	8	3.6	150	65	65	5	14	50
MTFENW2108200	NW2108200	M8	8		200	95	65		14	25
MTFENW2110160	NW2110160	M10	10	4.5	160	70	70	7	14	25
MTFENW2110200	NW2110200	M10	10		200	90	70		14	25
MTFENW2110250	NW2110250	M10	10		250	140	70		14	25
MTFENW2112200	NW2112200	M12	12	5.0	200	100	80	8	14	25
MTFENW2112250	NW2112250	M12	12		250	100	100		14	25
MTFENW2112300	NW2112300	M12	12		300	150	100		14	15
MTFENW2112350	NW2112350	M12	12		350	200	100		14	15
MTFENW2112400	NW2112400	M12	12		400	200	100		14	15



Suggested Hole Size in Timber		
Size	Softwood	Hardwood
	(mm)	(mm)
M8	4	6
M10	5	7.5
M12	6	9

Size	Length	Characteristic Tensile Capacity	Characteristic Shear Capacity	Characteristic Torsional Capacity	Characteristic Yield Capacity
		(kN)	(kN)	(kN)	(kN)
M8	≥150	27.06	16.78	37.95	27.20
M10	≥160	41.72	25.87	68.03	42.93
M12	=200	58.99	36.57	120.63	81.79
	≥250			115.87	

Note: Characteristic Load/Strength: 95% of these screws are expected to have a strength greater than the loads shown.

Disclaimer: While every reasonable effort has been made to ensure that this document is correct at the time of printing, Hobson Engineering®, its agencies and employees, disclaim any and all liability to any person in respect of anything or the consequences of anything done or omitted to be done in reliance upon the whole or any part of this document.

Bolt Tension | Anti-Vibration | Product Reliability | Traceability

hobson.com.au **QUALITY FASTENERS SINCE 1935**

