

DID YOU KNOW?

about our... **STAINLESS / ALUMINIUM HINGES**



HHB04D-0500038



HHB04D-0750050

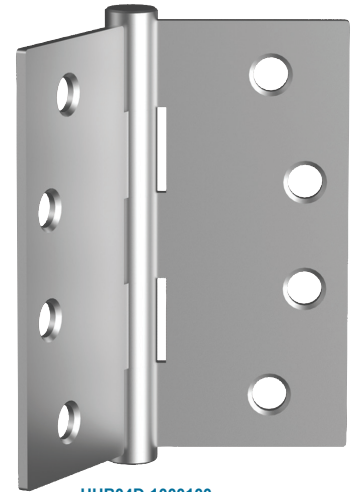


HHB04D-1000070

**NEW
PRODUCT**

BUTT HINGE FIXED PIN 304 STAINLESS / HEC

Part	Width W (mm)	Length L (mm)	Thickness T (mm)	No. of Holes	Screw Size	Pack (Pair)
HHB04D-0500038	38	50	1.5	4	6g x 20	20
HHB04D-0750050	50	75	1.6	6	6g x 20	12
HHB04D-1000070	70	100	1.8	8	8g x 25	1
HHB04D-1000100	100	100	2.5	8	8g x 30	1



HHB04D-1000100

**NEW
PRODUCT**

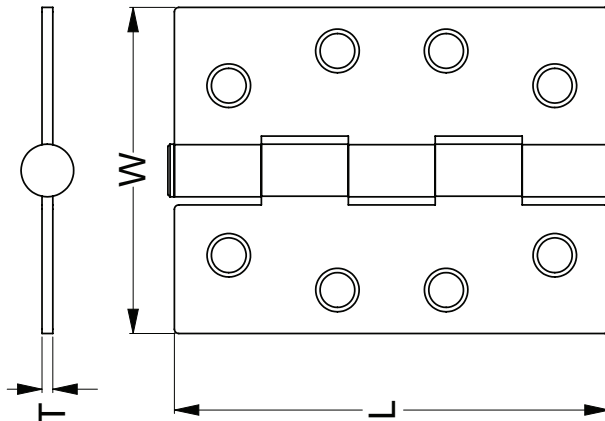
CSK Wood Screws included - Phillips Drive



BUTT HINGE HEAVY DUTY - LOOSE PIN 304 STAINLESS / HEC

Part	Width W (mm)	Length L (mm)	Thickness T (mm)	No. of Holes	Screw Size	Pack (Pair)
HHB04L-1000070	70	100	2.5	8	8g x 25	1

CSK Wood Screws included - Phillips Drive



1605231DYK

Hobson stainless hinges are not tested for load capacity. Load capacity of the hinge is not just related to the nominal weight of the door but must also include: the height and width of the door; frequency of use; distance between the hinges; plus the surrounding frame and fixings used.



DID YOU KNOW?

about our... **STAINLESS / ALUMINIUM HINGES**



**NEW
PRODUCT**

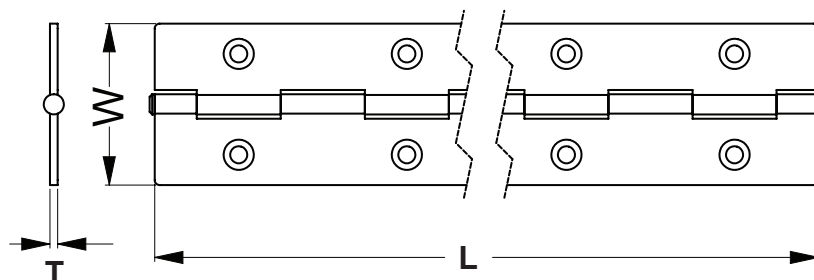
PIANO HINGE UNDRILLED 304 STAINLESS / HEC

Part	Width W (mm)	Length L (mm)	Thickness T (mm)	Pair (Pack)
HHP04U-02501800	25	1800	1.2	10
HHP04U-03201800	32	1800	1.2	10
HHP04U-03801800	38	1800	1.2	10
HHP04U-05001800	50	1800	1.2	10



PIANO HINGE DRILLED 304 STAINLESS / HEC

Part	Open W (mm)	Length L (mm)	Thickness T (mm)	No. of Holes	Pair (Pack)
HHP04D-03201800	32	1800	1.2	30	10



1605231DYK



DID YOU KNOW?

about our... **STAINLESS / ALUMINIUM HINGES**

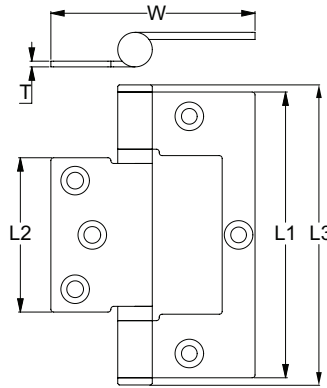
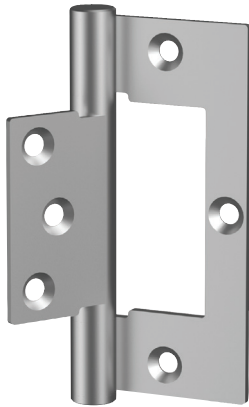


**NEW
PRODUCT**

FLUSH FITTING HINGE - FIXED PIN 6 HOLE 304 STAINLESS / HEC

Part	Width W (mm)	Length L1 (mm)	Length L2 (mm)	Length L3 (mm)	Thickness T (mm)	No. of Holes	Screw Size	Pack (Pair)
HHF04D-100	71	100	54.5	105	2.5	6	* 8g x 32 • M5 x 12	1

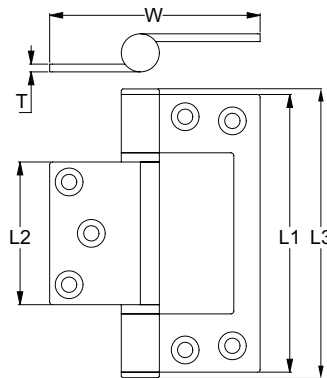
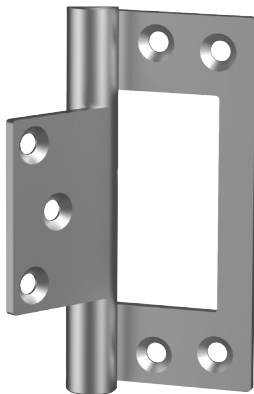
- * CSK Wood Screws - Phillips Drive - (6 pcs included)
- CSK Metal Thread Screw - Phillips Drive - (3 pcs included)



FLUSH FITTING HINGE - FIXED PIN 7 HOLE ALUMINIUM / HEC

Part	Width W (mm)	Length L1 (mm)	Length L2 (mm)	Length L3 (mm)	Thickness T (mm)	No. of Holes	Screw Size	Pack (Pair)
HHFALD-100	75.8	100	51.4	108	2.8	7	** 8g x 32 ** M5 x 12 Screws not included	1

- ** CSK Wood Screws - Phillips Drive
- ** CSK Metal Thread Screw - Phillips Drive



1605231DYK